



High-Speed Dye-Sub Digital Color Printer

CP-D90DW

Compact
Fast-Printing
Outstanding print quality
User-friendly
System Flexibility
Support Multiple Sizes

MITSUBISHI ELECTRIC
DIGITAL COLOR PRINTER

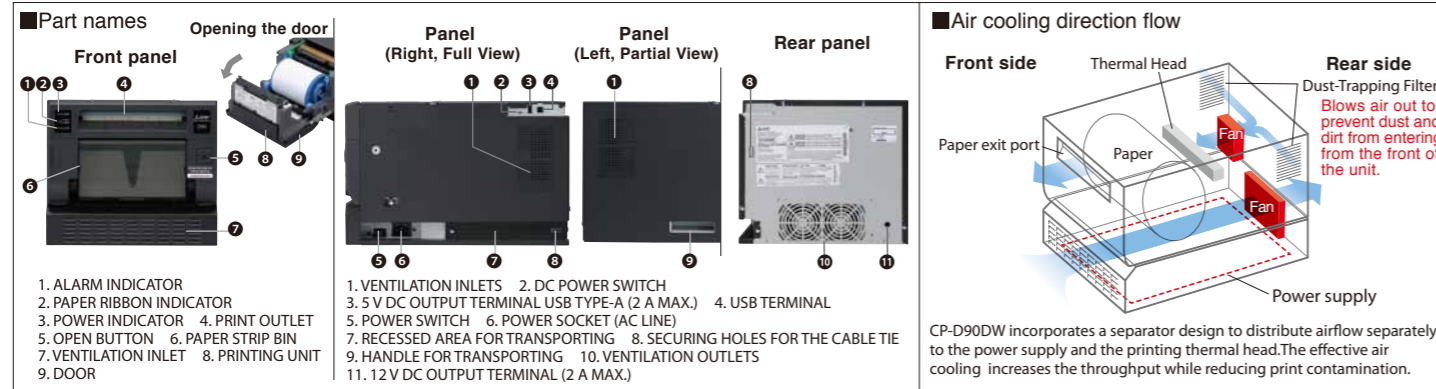
Changes for the Better



CP-D90DW Specifications

Model		CP-D90DW		
Print Technology	Dye sublimation thermal transfer full color. Three-color face progressive printing (yellow, magenta, cyan) plus surface lamination			
Gradations	256 Gradations (8 bit per color, approx. 16.7 million colors)			
Print Resolution	300 DPI			
Print Finish	Glossy/Matte			
Paper Capacity	Thick-Grade Media (approx. 230µm)	89 x 127mm (3.5x5")	450	
		102 x 152mm (4x6")	400	
		127 x 178mm (5x7")	230	
	Light Media (approx. 210µm)	152 x 203mm (6x8")	200	
		152 x 229mm (6x9")	180	
		102 x 152mm (4x6")	430	
Print Speed*3	Print Size	Auto Mode		
		Fine Mode	Light Image / Dark Image	Ultra Fine Mode
	89 x 127mm (3.5x5")	approx. 8.4sec	approx. 16.8sec	approx. 16.8sec
	102 x 152mm (4x6") *4	approx. 7.8sec	approx. 16.7sec	approx. 16.7sec
	127 x 178mm (5x7")	approx. 13.2sec	approx. 28.8sec	approx. 28.8sec
	152 x 203mm (6x8")	approx. 14.6sec	approx. 32.2sec	approx. 32.2sec
152 x 229mm (6x9")	approx. 16.2sec	approx. 35.8sec	approx. 35.8sec	
Interface	Hi-Speed USB Ver. 2.0			
Available Software Drivers	Windows®7/8/10(32bit/64bit)*1, MacOS®10.6~10.11*2			
Memory Size	128MB Volatile Memory for Temporary Retention. Data are erased after printing.			
Dimensions (WxDxH)	Approx. 275x365x237mm(10.8"x14.4"x9.3")			
Weight	Approx. 14kg (30.0lb)			
Power Supply	100-240V AC 50/60Hz			
Power Consumption	100-240V AC 50/60Hz 5.5A			
DC Output Terminals	12V / 2.0A max 5V / 2.0A max *5			
Accessories	Paper flange(1), Paper flange spacer(1), Ink cassette(1), Paper strip bin(1), Paper tray, AC power cord(120V), AC power cord(220-240V)(1), CD-ROM(1), Cable ties(2), Securing band/Screws/Washer(1set), Quick set up guide(1)			

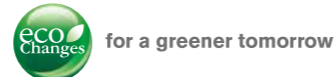
*1: Windows® 7, 8 and 10 are registered trademarks of Microsoft Corporation in the United States and/or other countries.
 *2: Mac OS X print driver are available on the website. Mac OS are trademarks of Apple Computer, Inc. in the United States and/or other countries.
 *3: Does not include data transfer, printer initialization and paper feed times.
 *4: Single print speed of 2-up print with CK-D768
 *5: DC Power Output Terminals cannot be used simultaneously, only one can be active at any given moment.



Consumables (Media, sold separately)

Model	Size	Prints per roll	Rolls per box	Thickness
CK-D735	89 x 127mm (3.5x5")	450 prints	2	approx. 230µm
CK-D746	102 x 152mm (4x6")	400 prints	2	
CK-D757	127 x 178mm (5x7")	230 prints	2	
CK-D768	152 x 203mm (6x8")*	200 prints	2	
CK-D769	152 x 229mm (6x9")*	180 prints	2	
CK-D868	152 x 203mm (6x8")*	215 prints	2	approx. 210µm

*Maximum size indicated. However, printer will still support printing multiple, smaller print sizes from this media model.



Eco Changes is the Mitsubishi Electric Group's environmental statement, and expresses the Group's stance on environmental management. Through a wide range of businesses, we are helping contribute to the realization of a sustainable society.

MITSUBISHI ELECTRIC CORPORATION
 HEAD OFFICE: TOKYO BLDG., 2-7-3 MARUNOUCHI, CHIYODA-KU, TOKYO 100-8310, JAPAN



High-Speed Dye-Sub Digital Color Printer
CP-D90DW
 Prints Fast with Exceptional Quality.
 The New Mitsubishi Compact Dye-Sub Printer
 to Expand Your Photo Printing Business.

Compact
Fast-Printing
Outstanding print quality
User-friendly
System Flexibility
Support Multiple Sizes

Outstanding product reliability and durability backed by Mitsubishi Electric's over 30 years of history in development and manufacture of dye-sub printers with over 100 thousand units installed worldwide.

for a greener tomorrow



High-Speed Dye-Sub Digital Color Printer CP-D90DW

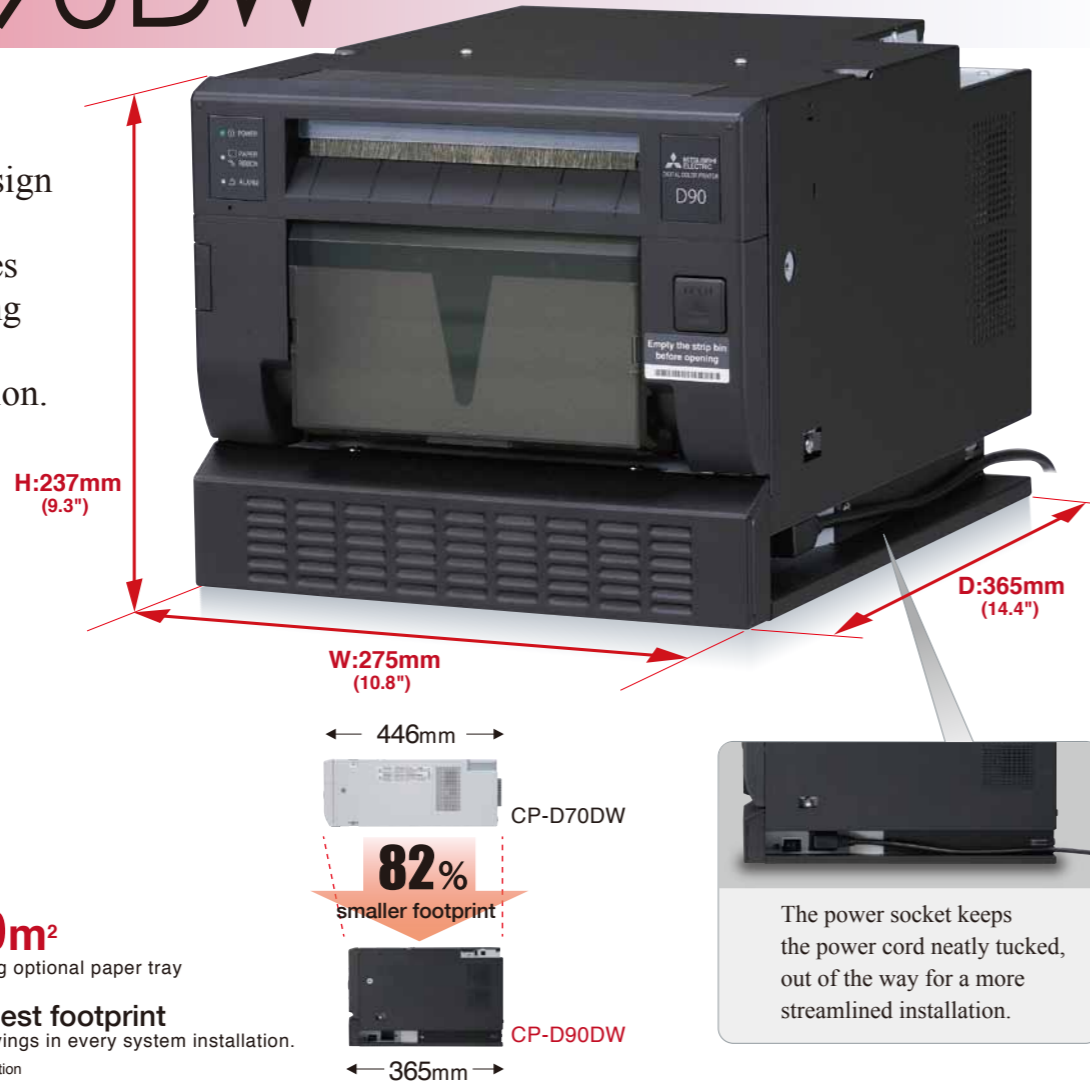
Compact

The new, compact design of the CP-D90DW strategically minimizes protruding and hanging cables for a neat, space-saving installation.



0.10m²
excluding optional paper tray

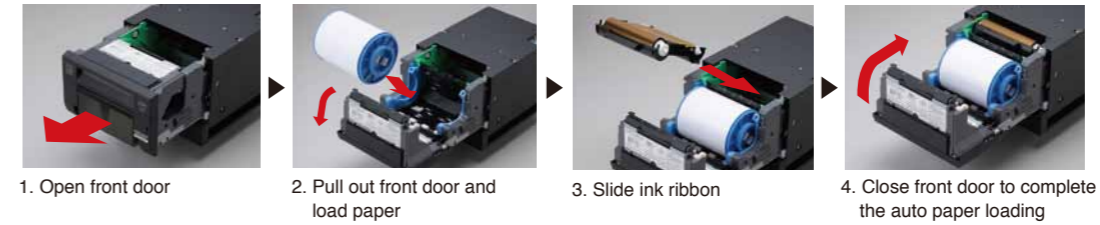
One of the world's smallest footprint
Providing overall space and cost savings in every system installation.
*Among 400 prints class, an in-company investigation



User-friendly

CP-D90DW is designed for ease of use and quick maintenance with front-loading design for media.

Easy Media Loading



- An energy-saving mode helps save operational cost by minimizing power consumption when on stand-by
- Long-life thermal head built with a coat of extra protective layer provides longevity and durability to minimize the total cost of ownership.
- Flanges attach easily to the paper roll by a quick pinch of latches.
- Power switch is easily accessible from the front of the unit.

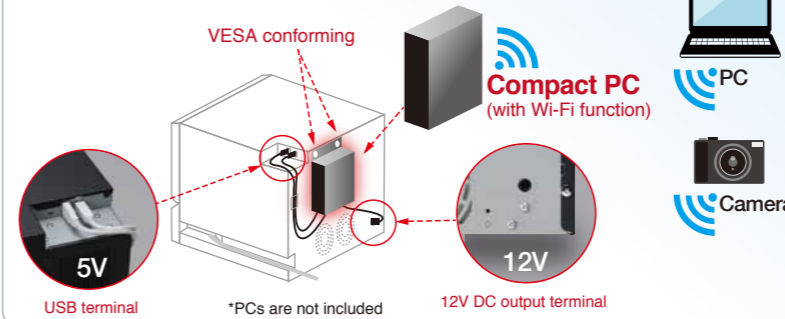
Maintenance



Easy access to the thermal head for cleaning.

System Flexibility

With available DC output terminals of 5V 2A and 12V 2A, small, low-powered computer like Stick PC, or mobile devices can easily be powered through the printer, supporting a broader range of possible applications such as wireless printing, helping build a cost-efficient printing station more easily.

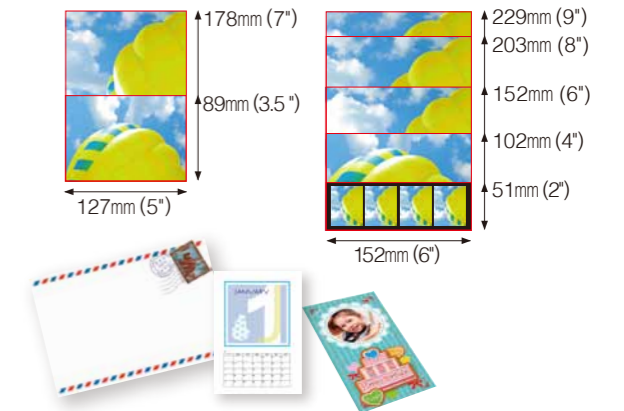


Supports 2 Types of Paper

CP-D90DW is compatible with all Thick-Grade media used by the D70 series printers, as well as Light media with higher print counts per roll.

Support Multiple Sizes

CP-D90DW has a wide range of the media size lineup. Moreover, it supports various print sizes using a Software Development Kit for customize applications. More than 51mm(2") toward paper feeding direction, 1 dot step.



Efficient Rewind Function

The rewind function offers cost savings and work-flow efficiency. It maximizes media usage through support of printing multiple sizes using only a single type of media.

Outstanding print quality with High speed

Mitsubishi Electric's CP-D90DW comes with an Image Analyzing Engine built-in to enable faster printing without compromise on image quality. Each image received is built and analyzed within the printer processor with its print density and details analyzed and printed accordingly, yielding the best result with every photo printed.

Optimized "First print" speed

The built-in image processor of the CP-D90DW reduces the processing workload of external computers, cutting down the overall initialization time of the first print output of every job it receives.

Improved Throughput

The improved thermal head cooling design of the CP-D90DW allows it to print more than 450 102 x 152mm(4 x 6") prints per hour*.

*Average speed of a single print from 102x152mm(4x6") size 2-up prints in its best condition, excluding media reloading time.

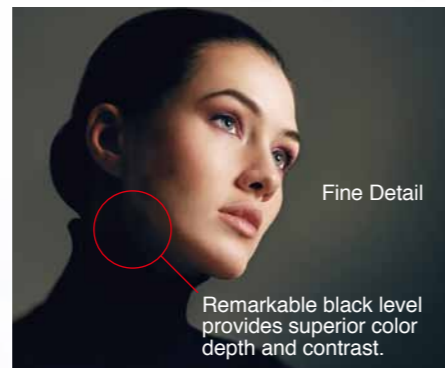
Deeper Black

Conventional Models



CP-D90DW

Prints photos with remarkable clarity, vivid colors, and higher quality finish.



New humidity sensor
The new, built-in humidity sensor restrains effect of humidity change and brings stable high quality.

All photo illustrations in this material are simulated only. Actual print samples need to be generated to see actual difference.

Automatic Optimization of Printing Speed



*Average speed of a single print from 102x152mm(4x6") size 2-up prints in Auto mode, excluding data transfer time